

# aP Workspace FAQ

Read our frequently asked questions (FAQ) to learn more about aP Workspace, a new coworking application to manage scenario tasks and collaborate seamlessly with internal stakeholders on product cost, manufacturability, and sustainability.

## FAQ Sections

1 Product & Release Information

2 Access & Implementation

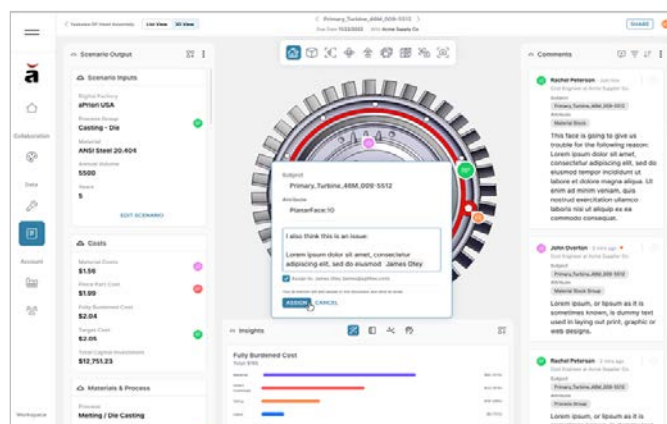
3 Technical Product Questions

## 1. Product & Release Information

### Q 1. What is aP Workspace?

aP Workspace is a collaboration and task management application available within aPriori's Manufacturing Insights Platform. It has four main features:

1. **3D Model & Data Commenting:** Add context to data insights by directly commenting on 3D models & data
2. **Real-time Collaboration:** Connect with teams in one space on the same data
3. **Task Management:** Improve productivity by prioritizing tasks based on importance and relevance
4. **Detailed Data & Insights:** Drive faster decision-making using detailed data insights



More information on aP Workspace is available on our [website](#).

# 1. Product & Release Information (Continued)

## Q 2. Who is aP Workspace intended for?

aP Workspace is intended for all aPriori application users (aP Design, aP Pro, report-only access, etc.). aPriori enables manufacturers with cross-functional engineering, manufacturing, and procurement teams to:

- Connect and review product cost, manufacturability, and CO<sub>2</sub> footprint data internally
- Build transparency and trust throughout the product development and procurement process

## Q 3. Where can I find information on aP Workspace and submit requests for help?

Use our new [aP Workspace help center resource page](#) to find relevant information or to request support.

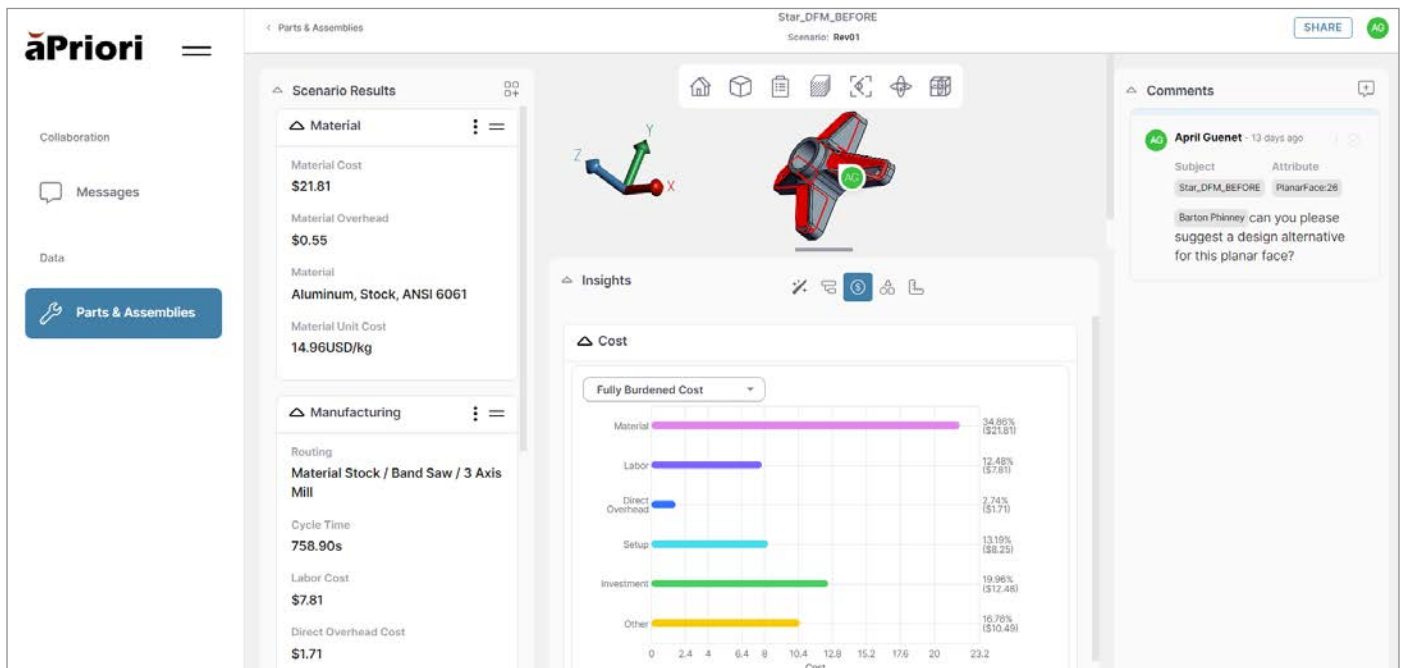
## Q 4. Can I engage with suppliers or external resources with aP Workspace?

aP Workspace is only available for internal teams within your aPriori deployment.

## Q 5. How is aP Workspace different from other collaboration and task management tools?

aP Workspace allows users to review and collaborate on actionable insights for cost, manufacturability (design, process routing, and materials), and sustainability in real time to accelerate time to market. aPriori provides one environment that teams can use for fast fact-based decision-making/negotiating and to improve understanding of product/project requirements and supplier capabilities.

The ability to tag colleagues and add comments directly on 3D models is not typically available in generic collaboration tools. aPriori builds on this capability by providing users with unique access to the manufacturing insights data and detail on how it was developed.



## 2. Access & Implementation

### **Q 1. What is the licensing structure?**

All existing aPriori users (cost developer, cost data author, report-only, and aP Generate users) will have access to aP Workspace as part of their foundation.

### **Q 2. Can users that don't have a cost data author license respond to messages they are tagged in?**

Yes, they can respond if they have another aPriori license type (report-only cost developer, etc.).

### **Q 3. How can I access aP Workspace and start using it?**

aP Workspace is available for all Cloud Customers on 22.1 who request access. All requests should come through the support desk or with support from your account's Customer Success Manager. All users upgraded to 23.1 will automatically have access to aP Workspace via a tile on their cloud home.

## 3. Technical Product Questions

### **Q 1. Do users access aP Workspace through aP Pro and aP Design?**

aP Workspace is available to cloud users. Users will need to access aP Workspace through the aP Workspace tile within the aPriori cloud login. While aP Workspace shares the same cloud data as aP Design and aP Pro, it is its own standalone application.

### **Q 2. How does aP Workspace scenario sharing work?**

aP Workspace enables all public aPriori scenarios within a customer deployment to become searchable within the aP Workspace application. Users can search, filter, and begin collaborating on all public scenarios they have access to in other aPriori applications within aP Workspace.

### **Q 3. Why can't I comment within aP Design?**

aPriori's manufacturing insights platform is a role-based platform bringing together teams spanning several departments. As there could be design engineers using aP Design, cost engineers using aP Pro, and eventually sourcing teams using aP Source, aP Workspace is the bridge between all of the role-based applications.

### **Q 4. Are comments made directly on a Geometric Cost Driver (GCD) or related to a specific coordinate?**

Comments are attached to a GCD, which is listed as the attribute. The pin on the 3D model is attached to a specific coordinate relative to the GCD. So, if the GCD moves, the pin also moves to maintain the same relative coordinate.

### 3. Technical Product Questions (Continued)

#### Q 5. What happens if I edit a scenario that has a comment associated with a GCD that is removed?

Within aP Workspace, the message thread will remain open, and an automated message will be generated saying the GCD has been removed. If users want to see the original GCD, simply click on the message menu and a screen capture of the view when the thread was created will be displayed.

#### Q 6. What is the difference between “mentioning” and “assigning” tasks?

The mentioning feature is designed to get a specific user’s attention in a comment. When mentioning any user in your organization with an aPriori license, aP Workspace will share the scenario with that user if they are not already collaborating on the scenario.

The assigning feature transfers (reassigns) the scenario comment thread to a specific user and is only viewable/available for the users that already had access to the scenario. You can also mention and assign a user in the same action. This will share the scenario with the user and assign the comment thread to them.

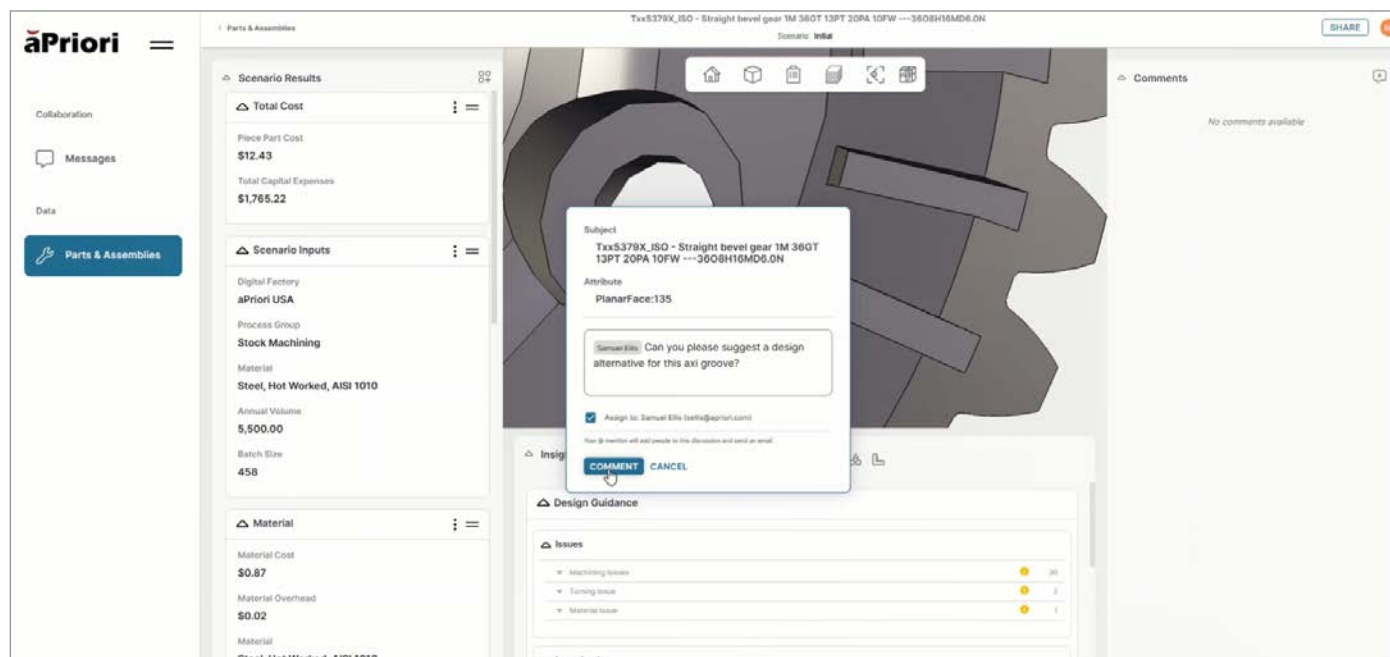
This distinction allows users to filter their comments by items they’ve been mentioned in vs. items they have ownership to complete.

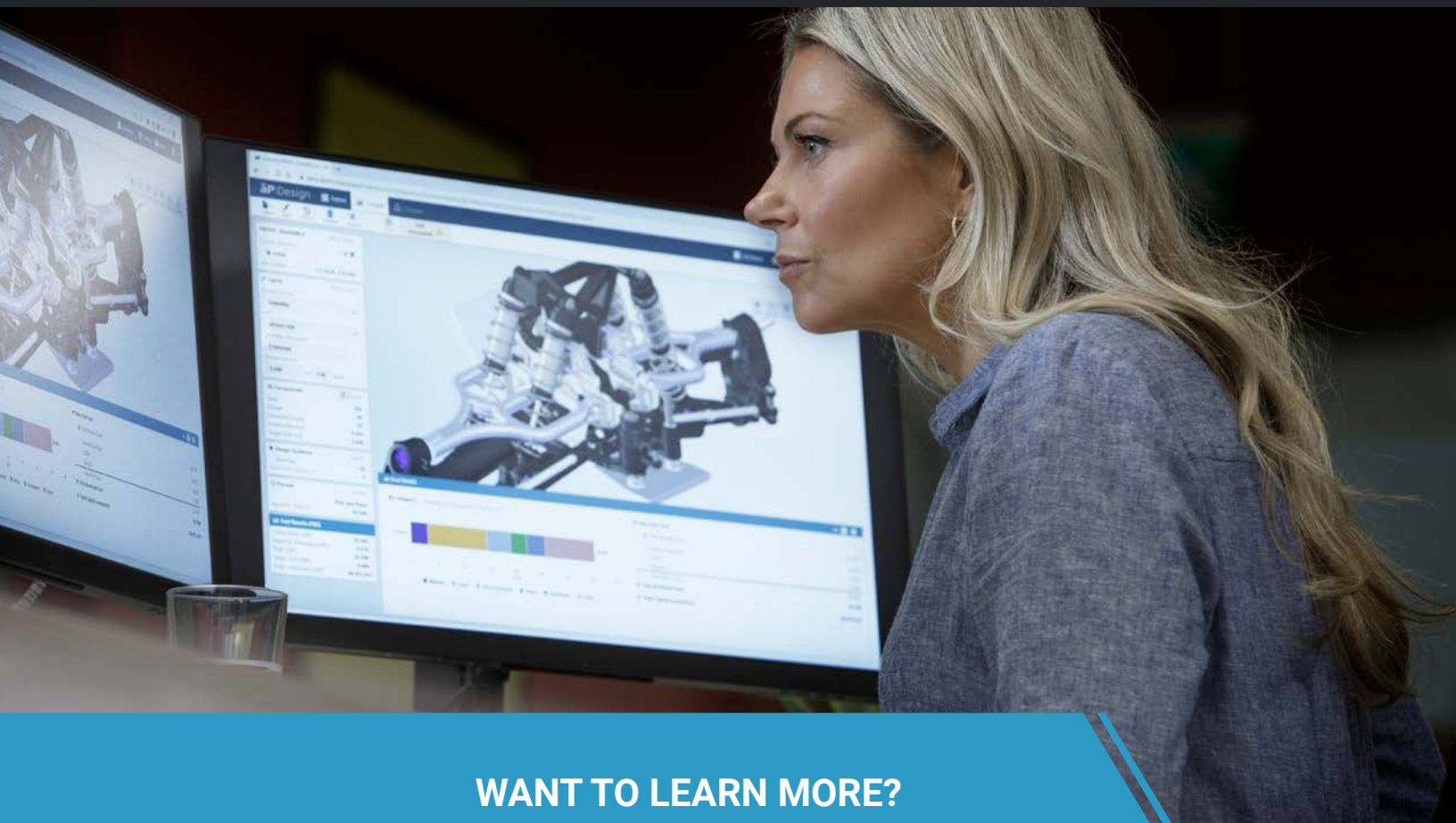
#### Q 7. Can users edit scenarios in aP Workspace?

While the user cannot edit the scenario in aP Workspace today, changes made to the scenario within aP Design or aP Pro will be reflected automatically within aP Workspace.

#### Q 8. What is the difference between adding an assignee in aP Design and sharing a scenario or mentioning someone in aP Workspace?

Making someone an assignee in aP Design transfers ownership of the scenario to them. You can only have one assignee on a given part. However, there is no limit to the number of users you can share or mention in a scenario. Users shared with or mentioned in aP Workspace are meant to provide input on the part. However, the assignee is responsible for evaluating feedback and making the final result.





**WANT TO LEARN MORE?**

[CLICK HERE](#) to learn more about aP Workspace.

**aPriori**

**Corporate Headquarters USA**

Concord, MA | [hello@apriori.com](mailto:hello@apriori.com)

**APAC**

Tokyo, Japan | [apac@apriori.com](mailto:apac@apriori.com)

**EMEA**

Belfast, Northern Ireland | [emea@apriori.com](mailto:emea@apriori.com)

**DACH**

Munich, Germany | [dach@apriori.com](mailto:dach@apriori.com)

aPriori is the leading provider of digital manufacturing simulation software that brings product design and sourcing teams closer to production. By leveraging the digital twin within our digital factories, we automatically generate design for manufacturability (DFM) and design for cost (DTC) insights, helping manufacturers collaborate across the product development process to make better design, sourcing and manufacturing decisions that yield higher value products in less time. aPriori solutions are now available either in the cloud or on-premise.



© 2023. aPriori. All rights reserved. Specifications subject to change without notice.  
All trademarks and registered trademarks are the property of their respective companies.