

aPriori Value Assessment Workshop

DATA SHEET

Redesign/Material Trade-off

CARRIAGE

Current Cost: **\$20.89** (Nickel Plated)

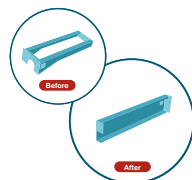
aPriori Cost: **\$7.81**
(Reduce size of part, change to galvanized)

Annual Volume: 2,000

Annual Savings: **\$26,160**

"aPriori allows fast cost comparison of manufacturing methods."

SAVINGS
\$26,160



NEED TO OPTIMIZE DESIGNS FOR MANUFACTURING AND COST?

- What impact will the features of your product design have on manufacturability and production costs?
- How do you establish an acceptable should cost benchmark for purchased components from your supply base?

By leveraging the digital twin with our digital factories, aPriori automatically generates DFM & DTC insights, helping manufacturers collaborate across the product development process to make better design, sourcing and manufacturing decisions and create higher value products in less time.

aPriori's solution validation workshop has three primary goals:

1. Technical validation of the solution using your parts
2. Establish the business benefit based on target use case
3. Identification of potential cost reduction opportunities on your products

Program Overview

The aPriori Value Assessment Workshop is a proof-of-concept engagement that can be conducted remotely or on-site to demonstrate aPriori's capabilities to your team, and provide a glimpse of the potential value a **digital manufacturing cost simulation** platform could offer to your company. Experience first hand how aPriori can have an immediate positive impact on your business and answer the following questions, critical to a larger scale deployment:

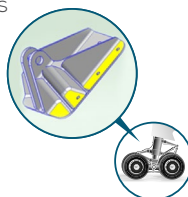
- How does real-time cost information empower employees to find cost savings through design and production alternatives?
- How does aPriori fit into an organization's processes and culture?
- What is the return on investment opportunity?

During the workshop, participants from your engineering, manufacturing, sourcing, and project management teams experience aPriori in action on your parts and assemblies.

Manufacturability Assessment (Design for Manufacture Optimization)

STRUCTURAL COMPONENT OF A LANDING GEAR SYSTEM.

aPriori automatically identified non-manufacturable part features, unnecessary design complexity and excessive tolerances



RESULTS

- ✓ Production Stage ECO Avoided
- ✓ Cycle Time Reduced 14.5%
- ✓ Achieved on-Time Delivery

Changing Processes (Re-Route & Re-Quote)

MAIN FRAME SIDES AND FLOOR

Current Cost: \$75.54 (Laser cut)

aPriori Cost: \$33.29

(Laser perimeter & large holes; punch other cutouts)

Annual Volume: 14,000

Annual Savings: \$591,500

(Laser cycle time savings: 14 min./machine)

SAVINGS
\$591,500



aPriori Digital Manufacturing Simulation Software

aPriori software improves efficiency by utilizing real-time digital manufacturing simulation, design guidance and cost visibility to help you overcome supply chain disruptions and restart new product innovation programs.

aPriori helps teams to work faster, smarter, and, most importantly, together, by bringing product design closer to the production line, enabling collaboration between engineering, sourcing, suppliers and cost engineering teams. This is made possible by leveraging the digital twin to create a Digital Manufacturing Thread, connecting product design to production, to help companies accelerate time to market and reduce product costs.

By integrating with your existing CAD / PLM environment, aPriori simulates real-life manufacturing capabilities as Digital Factories, providing accurate insights to leverage the existing digital twin, to help you collaborate efficiently right across the product development process. Working with real data in real time enables faster, more accurate and informed design decisions. This in turn increases efficiency and prevents expensive changes further down the line. Higher value products, at lower cost, in less time.



300 Baker Avenue | Concord, MA 01742 | Tel: 978.371.2006 | Fax: 978.371.2008 | info@apriori.com | www.apriori.com

They will also have the opportunity to explore design, material, manufacturing, and volume changes for current parts and projects to evaluate how aPriori will support their use case(s) and overall business processes.

You choose the location, date and time that is convenient for you and your evaluation team. aPriori Applications Engineers and Product Specialists will work with you to confirm the value of our digital manufacturing simulation technology on your parts, with your people.

Workshop Participants	Inputs
Who will be involved?	What do we need ahead of time?
<ul style="list-style-type: none">Design EngineerCost EngineerBusiness LeadSourcing Specialist	Sample parts per manufacturing process e.g. (sheet metal, castings, plastic injection molded parts, machined parts) for an active project that is indicative of typical parts, 3D CAD files, 2D prints, annual volume, batch size
Deliverables	
What results can you expect?	
<ul style="list-style-type: none">Detailed cost reports for parts evaluated with aPrioriSummary of potential ROIMutually agreed upon next steps	

Executive Summary

At the conclusion of the workshop, aPriori evaluates the results, incorporating participant feedback and a summary of findings into a final report which includes:

- Technical Fit Assessment** Confirms the solution fit
- Business Case Fit Assessment** Confirms the financial and strategic value that aPriori will deliver. Outlines how aPriori will identify hard-dollar savings to decrease product costs.
- Rollout Plan** Recommends an approach to deploy aPriori across the organization.

Next Steps

The world's leading discrete manufacturing and product companies rely on aPriori to generate DFM & DTC insights, helping them to collaborate across the product development process. The workshop will demonstrate how your organization can make better design, sourcing, and manufacturing decisions, drive product costs lower and create higher value products in less time.

To learn more, contact your aPriori representative or productcost@apriori.com.

**Note: aPriori may choose not to engage this service with any company that is not considered qualified. Decisions regarding which companies are qualified and which*